

# STUDIO RATECARD 2022-2023

Included in our studio rates is the following:

- Bose Smart Speaker
- Iron
- Ironing board
- Clothing rails
- Towels
- Robes
- Polyboards
- Poly Stands
- Mini Fridge
- Wifi
- Steamer

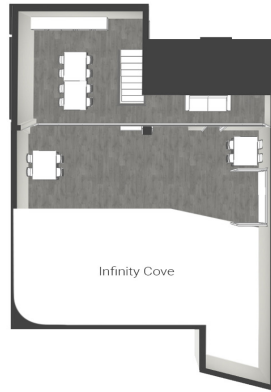
Overtime is charged at £95 + VAT before 9AM and after 6PM.

We offer Catering and Equipment hire. Just email:

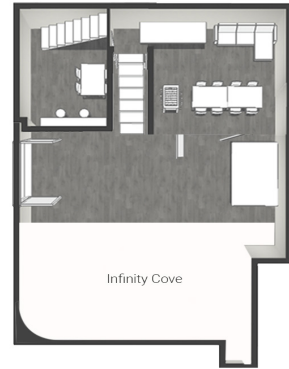
[ethan@jetstudios.co.uk](mailto:ethan@jetstudios.co.uk)



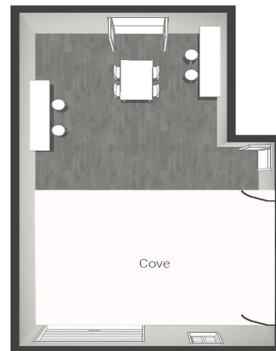
STUDIO 1



STUDIO 2



STUDIO 3



STUDIO 4

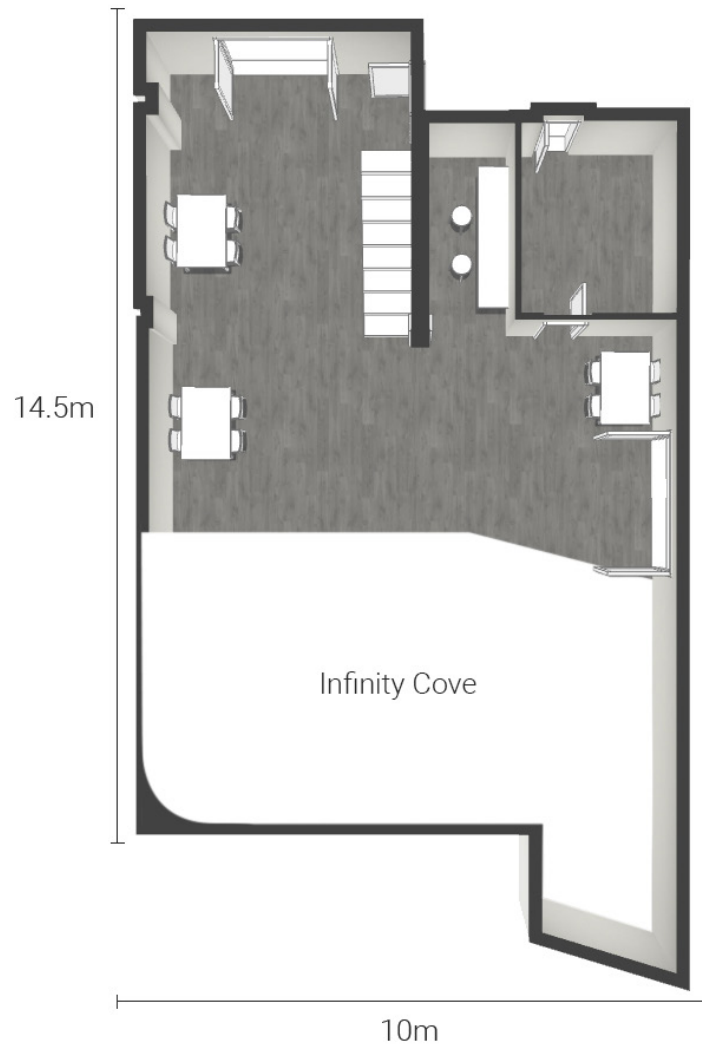
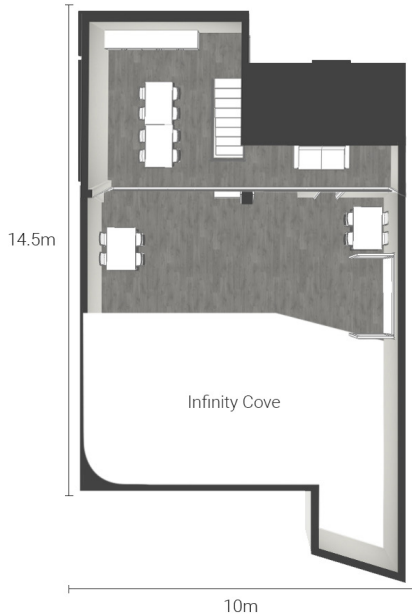


| STUDIO   | STANDARD RATE                 | EDITORIAL                     |
|----------|-------------------------------|-------------------------------|
| Studio 1 | £750 + VAT<br>(09.00 - 18.00) | Contact for Editorial Rate    |
| Studio 2 | £750 + VAT<br>(09.00 - 18.00) | Contact for Editorial Rate    |
| Studio 3 | £575 + VAT<br>(09.00 - 18.00) | £475 + VAT<br>(09.00 - 18.00) |
| Studio 4 | £575 + VAT<br>(09.00 - 18.00) | £475 + VAT<br>(09.00 - 18.00) |

| STUDIO   | HALF DAY                | HOURLY                   |
|----------|-------------------------|--------------------------|
| Studio 3 | £395 + VAT<br>(4 Hours) | N/A                      |
| Studio 4 | £395 + VAT<br>(4 Hours) | £150 + VAT<br>(per hour) |

# STUDIO 1

2650 sq. ft.



## Key Features:

- Ground Floor Studio
- Drive in access
- Ground Floor hair and make-up + dressing room
- 1st Floor Mezzanine with Mini Fridge
- 300MB/S Wifi
- Bose Smart Speaker
- 1x 63Amp Power Supply (Single Phase)
- Distro Box (on request)
- 6x Poly Boards
- 6x Poly Stands
- 3x Rails
- Hangers
- Iron
- Ironing Board
- Steamer
- Can join Directly with Studio 2
- Blackout on request



## Infinity Cove Specs:

Width: 9M

Height: Lowest Point - 3.1M. Highest Point - 4.5M

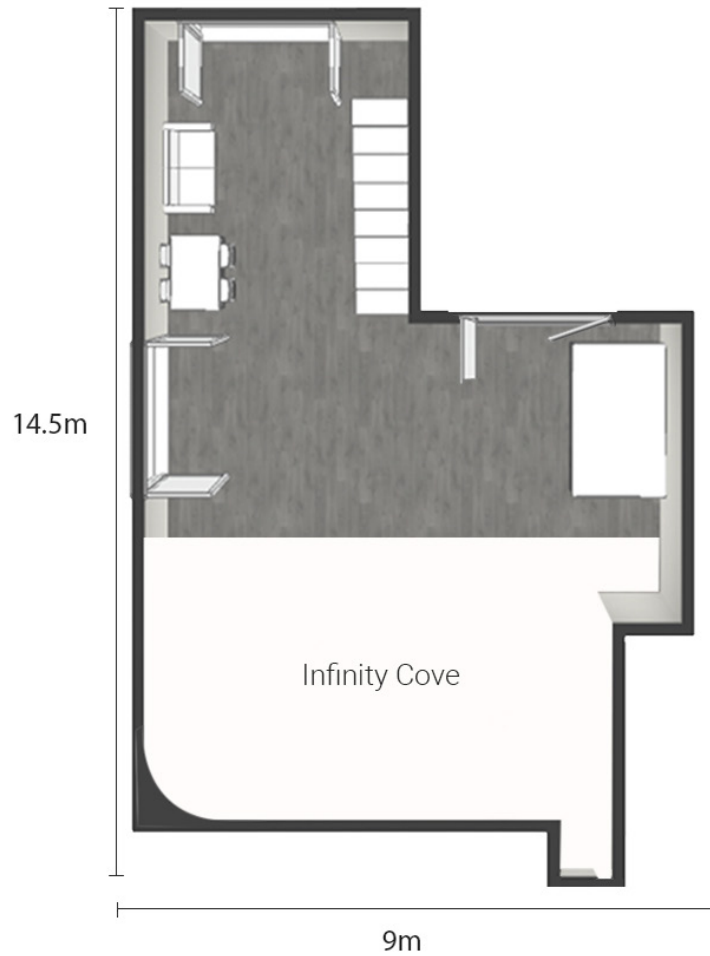
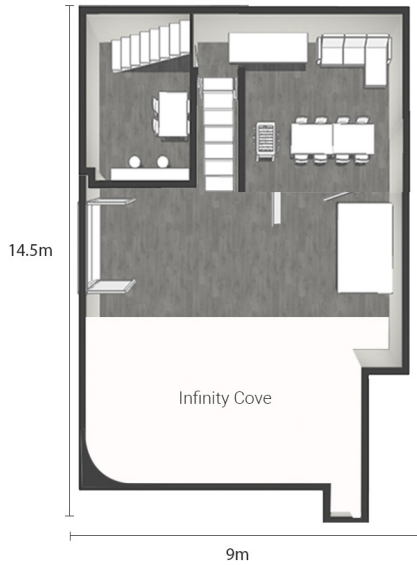
Depth: 5.7M

JET

BLACK  
LAB

# STUDIO 2

2650 sq. ft.



## Key Features:

- Ground Floor Studio
- Drive in access
- 1st Floor hair and make-up + dressing room
- 1st Floor Mezzanine with Mini Fridge
- 300MB/S Wifi
- Bose Smart Speaker
- 1x 63Amp Power Supply (Single Phase)
- Distro Box (on request)
- 6x Poly Boards
- 6x Poly Stands
- 3x Rails
- Hangers
- Iron
- Ironing Board
- Steamer
- Can join Directly with Studio 1, 3 and 4
- Blackout on request



## Infinity Cove Specs:

Width: 9M

Height: Lowest Point - 2.8M. Highest Point - 3.8M

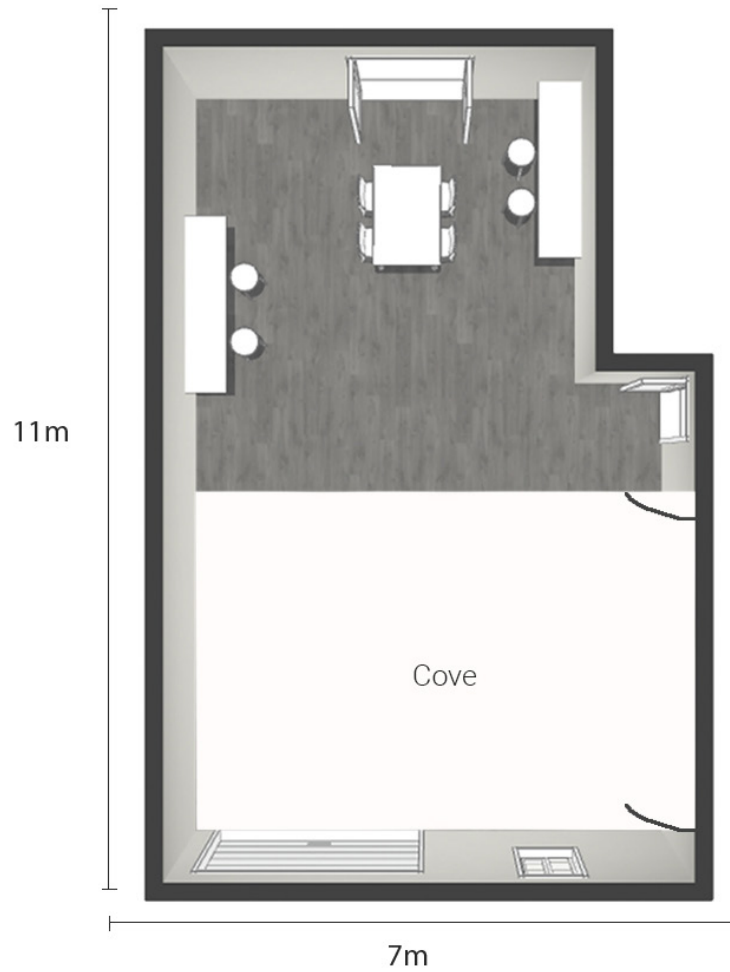
Depth: 5.9M

JET

BLACK  
LAB

# STUDIO 3

1500 sq. ft.



## Key Features:

- Ground Floor Studio
- Drive in access
- Standard 13Amp Power
- 300MB/S Wifi
- Bose Smart Speaker
- 2x Poly Boards
- 2x Poly Stands
- 2x Rails
- Hangers
- Iron
- Ironing Board
- Steamer
- Can join Directly with Studio 2
- Blackout on request



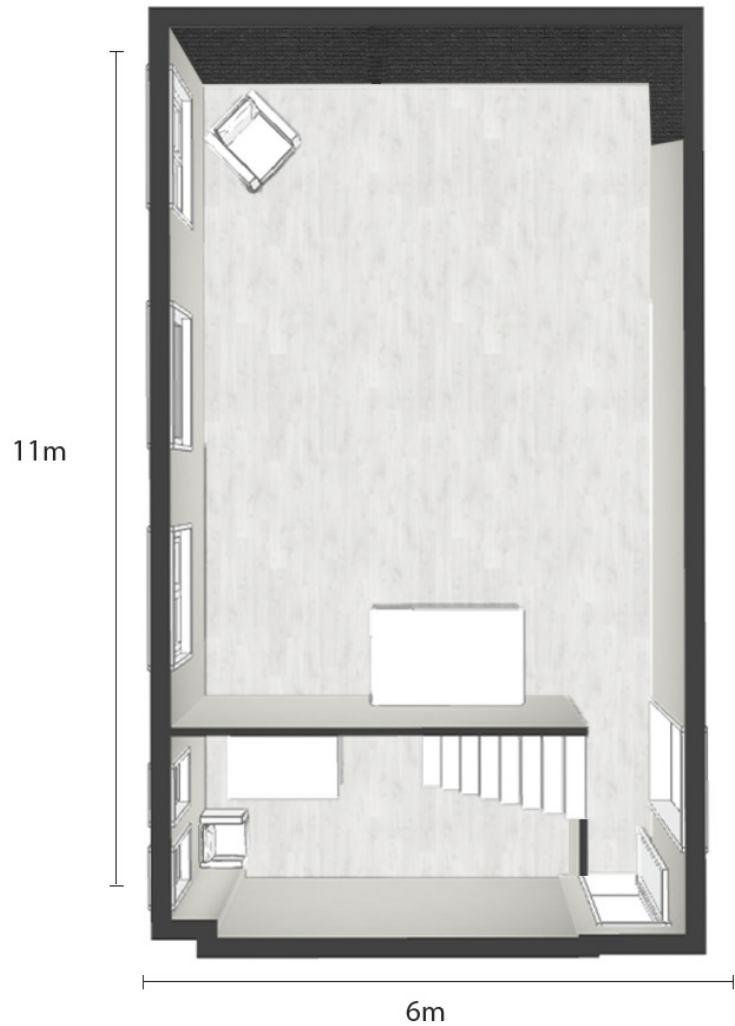
## Cove Specs:

Width: 5.5M  
Height: 3.4M  
Depth: 7M



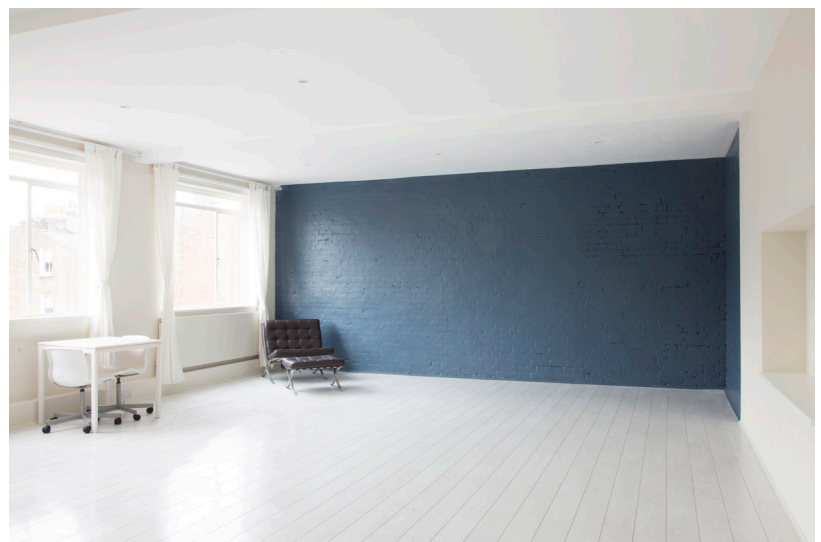
# STUDIO 4

1100 sq. ft.



## Key Features:

- 1st Floor Studio
- Daylight Studio
- Standard 13Amp Power
- 300MB/S Wifi
- Bose Smart Speaker
- 2x Poly Boards
- 2x Poly Stands
- 2x Rails
- Hangers
- Iron
- Ironing Board
- Steamer
- Can join Directly with Studio 2
- Blackout on request



## Shoot Specs:

Width: 6M  
Height: 2.75M  
Length: 8.3M

JET

BLACK  
LAB